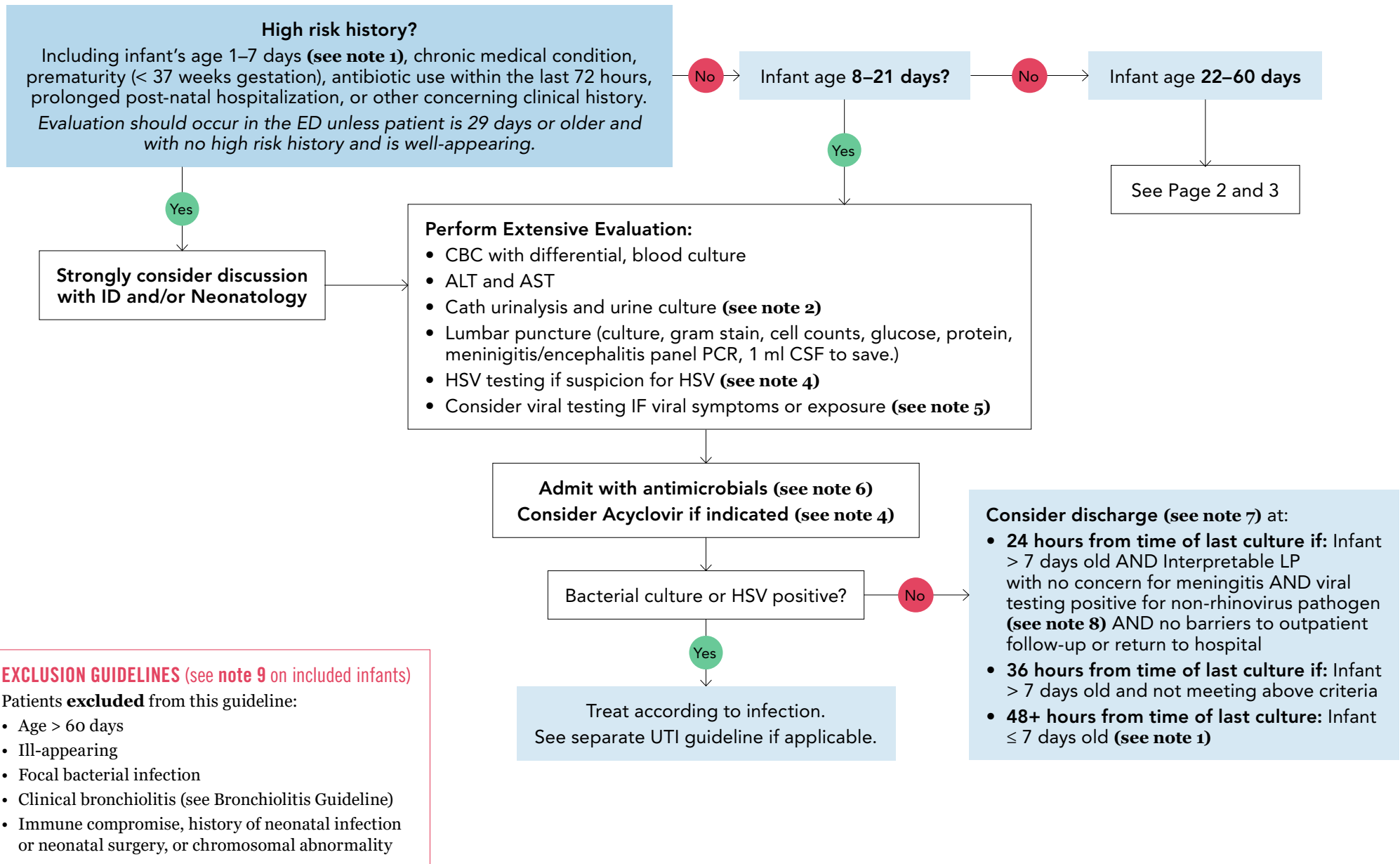
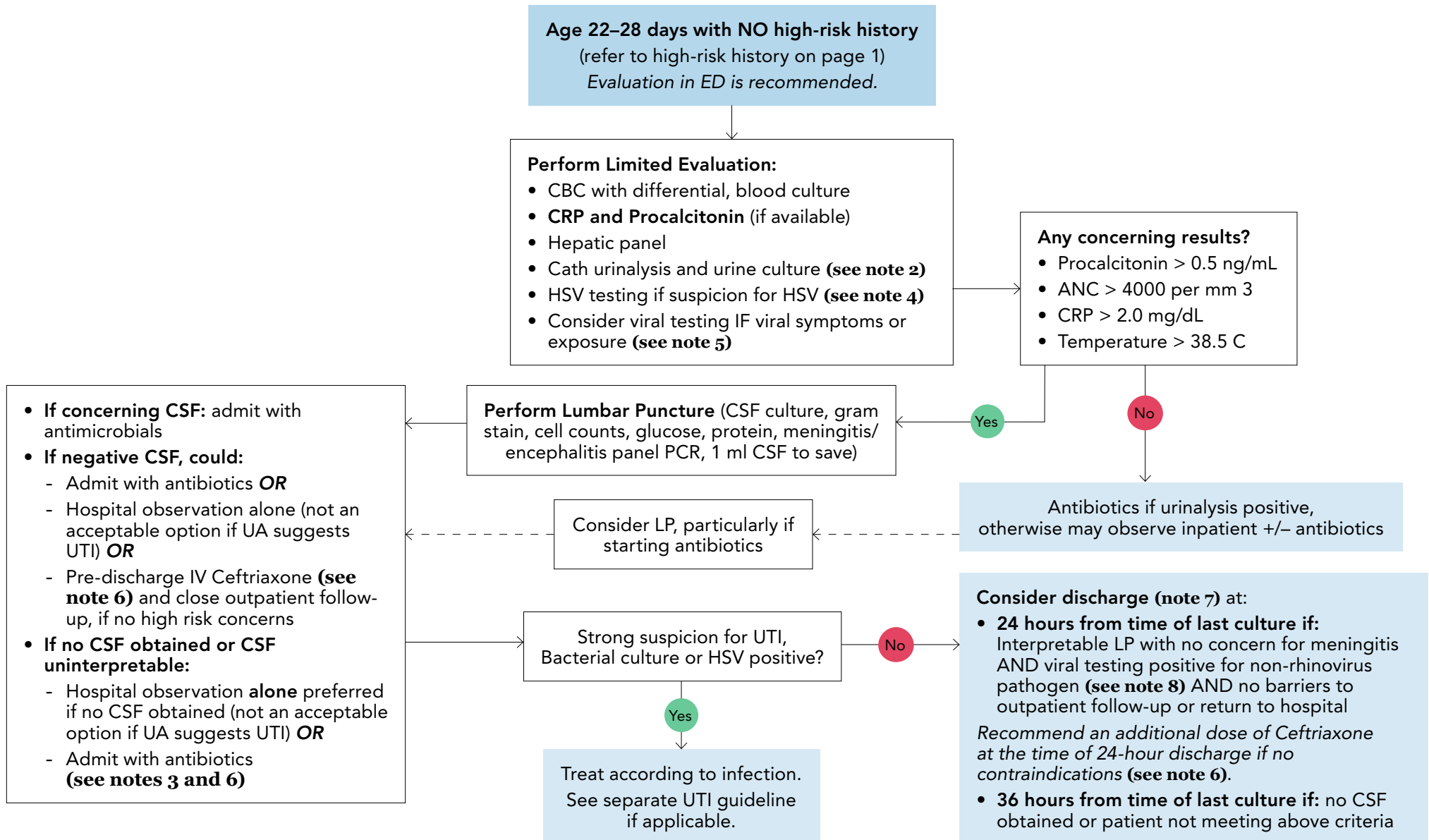


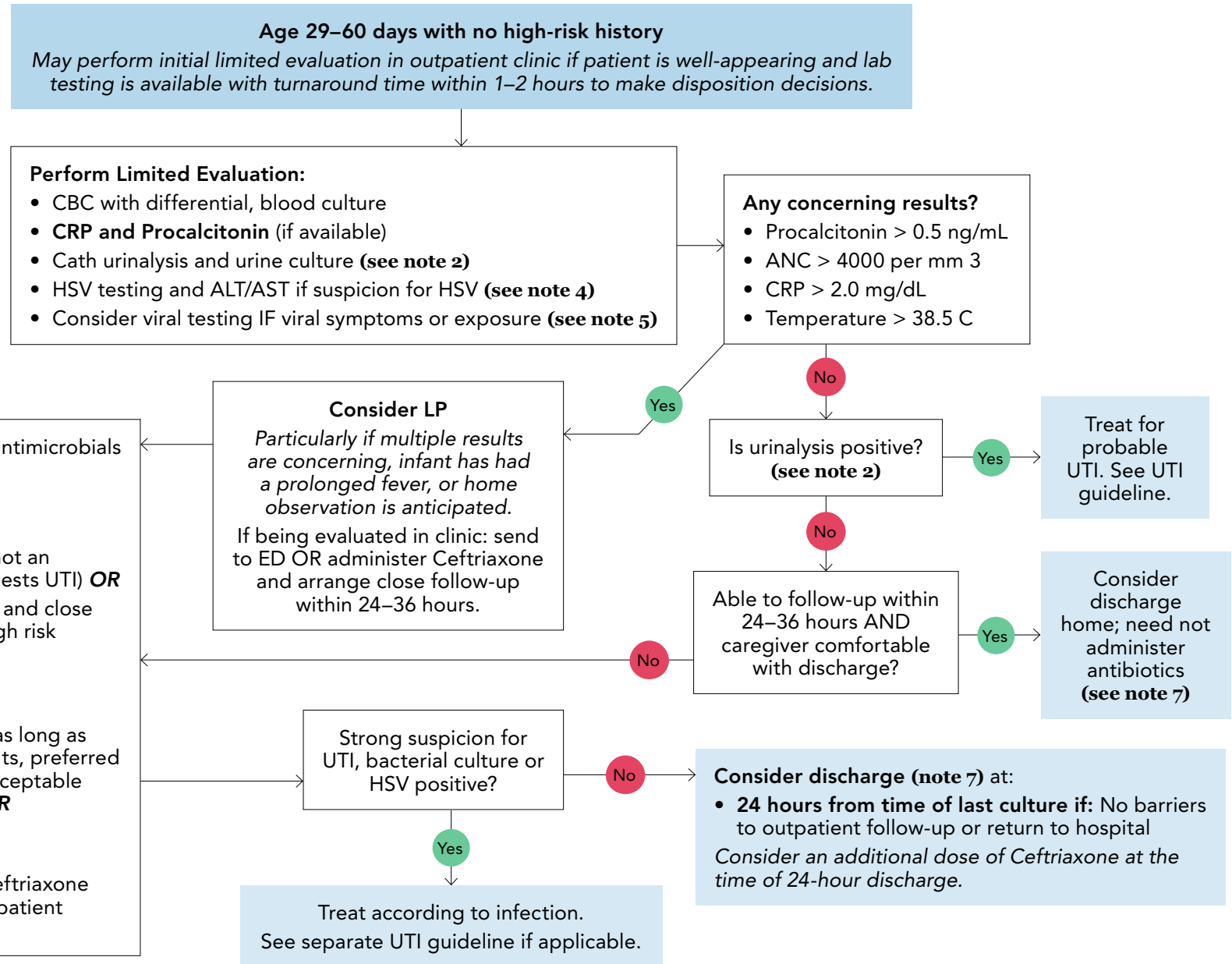
Aim: Standardize evaluation and management of well-appearing febrile infants, safely reduce length of stay and any unnecessary interventions.



Aim: Standardize evaluation and management of well-appearing febrile infants, safely reduce length of stay and any unnecessary interventions.



Aim: Standardize evaluation and management of well-appearing febrile infants, safely reduce length of stay and any unnecessary interventions.



Aim: Standardize evaluation and management of well-appearing febrile infants, safely reduce length of stay and any unnecessary interventions.

NOTE 1: INFANTS 1-7 DAYS OLD

- Neonates age 1–7 days old are excluded from the AAP 2021 Guideline “Evaluation and Management of Well-Appearing Febrile Infants 8 to 60 Days Old”, however based on expert input at Children’s MN, they are included in this guideline with the assumption that their management will be performed in consultation with ID and/or Neonatology
- If planned or considered admission to NICU, recommend discussion of antibiotic choice with neonatologist
- Discharge of infants < 8 days old before 48 hours of negative cultures is not supported in the literature

NOTE 2: URINALYSIS AND UTI

- **Urinalysis (UA) considered positive if:** presence of **nitrites OR pyuria** (\geq trace leukocyte esterase or ≥ 5 WBC/hpf)
- Dilute/unspun urine specimen ($\text{SG} < 1.015$) may underestimate WBC count
- Several studies indicate very low risk of bacterial meningitis in well-appearing infants > 28 days of age with UTI.

NOTE 3: BACTERIAL MENINGITIS

- Consider longer observation in pts with high suspicion of bacterial meningitis (i.e. CSF pleocytosis.) Mean time to positivity = 28.6 hours, 81% identified by 36 hours
- “Abnormal CSF” would be CSF with values straying from the typical ranges for age listed in the table below¹:

	Age, days	Median	Range
WBCs per mm ³	1–28	5	0–18
	29–60	3	0–8.5
Protein mg/dL	1–28	73	15.8–131.0
	29–60	54	5.5–105.5
Glucose	1–28	46	30–61
	29–60	48	20.6–65.5

NOTE 4: HSV

- Recommend HSV testing if any of the following: known HSV exposure, maternal history of genital or mucocutaneous lesions, maternal perinatal fevers (i.e. 48 hours prior to, or after, delivery), persistent hypothermia, mucus membrane ulcers, skin vesicles, seizure, leukopenia and/or thrombocytopenia, increased ALT or AST, CSF pleocytosis in the absence of positive Gram stain results
- HSV testing should include:
 - PCR on whole blood
 - PCR of the eye, mouth, nasopharynx and anus
 - PCR on CSF
 - PCR of any vesicle
- **Acyclovir dosing:** 20 mg/kg/dose IV q 8 hours

NOTE 5: ADDITIONAL VIRAL TESTING

- Consider rapid influenza and RSV in season, and SARS-CoV2
- Consider Respiratory Pathogen PCR Panel
- Consider Enterovirus PCR on plasma (more prevalent in summer and fall, but can be seen year-round)

Aim: Standardize evaluation and management of well-appearing febrile infants, safely reduce length of stay and any unnecessary interventions.

NOTE 6: ANTIBIOTIC DOSING FOR INFANTS > 2 kg***Suspicion of Bacterial Meningitis**

- **1–7 days of age (See note 1):**
Ampicillin 100 mg/kg IV Q8h AND Ceftazidime 50 mg/kg IV Q12H
- **8–28 days of age:** Ampicillin 75 mg/kg IV Q6H AND Ceftazidime 50 mg/kg IV Q8H
- **29–60 days of age:** Ceftriaxone 50 mg/kg IV Q12H AND Vancomycin 15 mg/kg IV Q6H

No Suspicion of Bacterial Meningitis

- **1–7 days of age (See note 1):** Ampicillin 50 mg/kg IV Q8H AND Ceftazidime 50 mg/kg IV Q12H
- **8–28 days:** Ampicillin 50 mg/kg IV Q8H AND Ceftazidime 50 mg/kg IV Q8H
- **29–60 days:** Ceftriaxone 50 mg/kg IV Q24H

*Ceftriaxone monotherapy prior to a discharge, or Ceftriaxone plus Ampicillin in an inpatient, may be considered in the appropriate clinical setting, in term neonates 22–28 days with normal bilirubin levels and not receiving IV calcium-containing fluids (including TPN).

*If infant's weight ≤ 2 kg, consult with pharmacy and/or NICU for antibiotic dosing.

NOTE 7: SHARED DECISION MAKING – FACTORS TO CONSIDER WHEN DECIDING DISCHARGE TIMING

- Alternative source for fever and patient's risk criteria
- Caregiver experience and comfort
- Accessibility to reliable follow-up within 24–36 hours
- Proximity to hospital should new concerns arise
- Infant's fever curve and other clinical status (e.g., oral intake)
- Family awareness that cultures may turn positive after discharge, potentially necessitating return to hospital

NOTE 8: RHINOVIRUS DETECTION

- Human rhinovirus detection is common in febrile infants. Detection of this virus alone does not alter risk of invasive bacterial infection in infants 1–28 days old

NOTE 9: PATIENTS INCLUDED IN THIS GUIDELINE

Febrile infants that **remain on this pathway** include:

- Infants with diarrhea
- Infants with acute otitis media
- Infants with mild viral URI symptoms only (not bronchiolitis) and/or only viral PCR panel positivity

NOTE 10: IF A TERM INFANT 29–60 DAYS HAS AN LP WITH UNEQUIVOCALLY CLEAR CSF, OPTIONS INCLUDE:

- Discharge home after a dose of Ceftriaxone AND follow-up within 24 hours OR
- Observe in the hospital without antibiotics OR
- Admit to the hospital with empiric antimicrobials

Use shared decision making with caregivers and clinical judgement considering additional factors such as barriers to follow-up.

Aim: Standardize evaluation and management of well-appearing febrile infants, safely reduce length of stay and any unnecessary interventions.

REFERENCES:

1. Adapted from Byington CL, Kendrick J, Sheng X. Normative cerebrospinal fluid profiles in febrile infants. *J Pediatr*. 2011;158(1):130–134.
2. Pantell R H, Roberts K B, Adams W G, et al. Evaluation and Management of Well-Appearing Febrile Infants 8 to 60 Days Old. *Pediatrics*. 2021;148(2)
3. Elizabeth R. Alpern, Nathan Kuppermann, Stephen Blumberg, Genie Roosevelt, Andrea T. Cruz, Lise E. Nigrovic, Lorin R. Browne, John M. VanBuren, Octavio Ramilo, Prashant Mahajan; PEDIATRIC EMERGENCY CARE APPLIED RESEARCH NETWORK (PECARN), Time to Positive Blood and Cerebrospinal Fluid Cultures in Febrile Infants ≤ 60 Days of Age. *Hosp Pediatr* September 2020; 10 (9): 719–727
4. Doby EH, Stockmann C, Korgenski EK, Blaschke AJ, Byington CL. Cerebrospinal fluid pleocytosis in febrile infants 1-90 days with urinary tract infection. *Pediatr Infect Dis J* [Internet]. 2013;32:1024–6. Available from: <http://www.ncbi.nlm.nih.gov/pubmed/23584580>
5. Byington CL, Reynolds CC, Korgenski K, Sheng X, Valentine KJ, Nelson RE, et al. Costs and Infant Outcomes After Implementation of a Care Process Model for Febrile Infants. Vol. 130, *PEDIATRICS*. 2012. p. e16–24.
6. Biondi EA, Byington CL. Evaluation and Management of Febrile, Well-appearing Young Infants. Vol. 29, *Infectious Disease Clinics of North America*. 2015. p. 575–85.
7. Byington CL, Rittichier KK, Bassett KE, Castillo H, Glasgow TS, Daly J, et al. Serious bacterial infections in febrile infants younger than 90 days of age: the importance of ampicillin-resistant pathogens. *Pediatrics*. 2003;111:964–8.
8. Pantell RH, Roberts KB, Adams WG, Dreyer BP, Kuppermann N, O'Leary ST, et al. Evaluation and management of well-appearing febrile infants 8 to 60 days old. *Pediatrics*. 2021;
9. Byington CL, Kendrick J, Sheng X. Normative cerebrospinal fluid profiles in febrile infants. *J Pediatr*. 2011;158:33–7.
10. Hoberman a, Wald ER. Urinary tract infections in young febrile children. *Pediatr Infect Dis J*. 1997;16(1):11–7.
11. Leazer R, Erickson N, Paulson J, Zipkin R, Stemmler M, Schroeder AR, et al. Epidemiology of Cerebrospinal Fluid Cultures and Time to Detection in Term Infants. *Pediatrics* [Internet]. 2017;139(5):e20163268. Available from: <http://pediatrics.aappublications.org/lookup/doi/10.1542/peds.2016-3268>
12. Biondi E, Evans R, Mischler M, Bendel-Stenzel M, Horstmann S, Lee V, et al. Epidemiology of Bacteremia in Febrile Infants in the United States. *Pediatrics* [Internet]. 2013;132(6):990–6. Available from: <http://pediatrics.aappublications.org/cgi/doi/10.1542/peds.2013-1759>
13. Schroeder AR, Shen MW, Biondi EA, Bendel-Stenzel M, Chen CN, French J, et al. Bacteraemic urinary tract infection: management and outcomes in young infants. *Arch Dis Child* [Internet]. 2015;archdischild-2014-307997-. Available from: <http://adc.bmj.com/lookup/doi/10.1136/archdischild-2014-307997>
14. Caviness AC, Demmler GJ, Swint JM, Cantor SB. Cost-effectiveness analysis of herpes simplex virus testing and treatment strategies in febrile neonates. *Arch Pediatr Adolesc Med* [Internet]. 2008;162:665–74. Available from: http://www.ncbi.nlm.nih.gov/entrez/query.fcgi?cmd=Retrieve&db=PubMed&dopt=Citation&list_uids=18606938
15. Mahajan P, Browne LR, Levine DA, Cohen DM, Gattu R, Linakis JG, et al. Risk of Bacterial Coinfections in Febrile Infants 60 Days Old and Younger with Documented Viral Infections. *J Pediatr* [Internet]. 2018 Dec [cited 2019 Aug 23];203:86–91.e2. Available from: <https://linkinghub.elsevier.com/retrieve/pii/S0022347618310722>
16. McDaniel CE, Ralston S, Lucas B, Schroeder AR. Association of Diagnostic Criteria With Urinary Tract Infection Prevalence in Bronchiolitis: A Systematic Review and Meta-analysis. *JAMA Pediatr* [Internet]. 2019 [cited 2020 Aug 19];173(3):269–77. Available from: <http://www.ncbi.nlm.nih.gov/pubmed/30688987>
17. Jaskiewicz JA, McCarthy CA, Richardson AC, White KC, Fisher DJ, Dagan R, et al. Febrile infants at low risk for serious bacterial infection--an appraisal of the Rochester criteria and implications for management. Febrile Infant Collaborative Study Group. *Pediatrics* [Internet]. 1994 Sep [cited 2015 Apr 3];94(3):390–6. Available from: <http://www.ncbi.nlm.nih.gov/pubmed/8065869>
18. Greenhow TL, Hung Y-Y, Herz AM, Losada E, Pantell RH. The Changing Epidemiology of Serious Bacterial Infections in Young Infants. *Pediatr Infect Dis J* [Internet]. 2013; Available from: <http://www.ncbi.nlm.nih.gov/pubmed/24326416>
19. Huppler AR, Eickhoff JC, Wald ER. Performance of Low-Risk Criteria in the Evaluation of Young Infants With Fever: Review of the Literature. *Pediatrics* [Internet]. 2010;125(2):228–33. Available from: <http://pediatrics.aappublications.org/cgi/doi/10.1542/peds.2009-1070>
20. Biondi E a., Mischler M, Jerardi KE, Statile AM, French J, Evans R, et al. Blood Culture Time to Positivity in Febrile Infants With Bacteremia. *JAMA Pediatr* [Internet]. 2014;1–6. Available from: <http://archpedi.jamanetwork.com/article.aspx?doi=10.1001/jamapediatrics.2014.895%5Cnhttp://www.ncbi.nlm.nih.gov/pubmed/25048522>
21. Blaschke AJ, Korgenski EK, Wilkes J, et al. Rhinovirus in Febrile Infants and Risk of Bacterial Infection. *Pediatrics*. 2018;141(2):e20172384
22. Schnadower D, Kuppermann N, Macias CG, et al. Febrile infants with urinary tract infections at very low risk for adverse events and bacteremia. *Pediatrics*. 2010;126:1074-1083. doi:10.1542/peds.2010-0479.
23. Beverly R. Young, Tran H.P. Nguyen, Amy Alabaster, Tara L. Greenhow; The Prevalence of Bacterial Meningitis in Febrile Infants 29–60 Days With Positive Urinalysis. *Hosp Pediatr* August 2018; 8 (8): 450–457. <https://doi.org/10.1542/hpeds.2017-0254>
24. Martinez E, Mintegi S, Vilar B, Martinez MJ, Lopez A, Catediano E, Gomez B. Prevalence and predictors of bacterial meningitis in young infants with fever without a source. *Pediatr Infect Dis J*. 2015 May;34(5):494-8. doi: 10.1097/INF.0000000000000629.

Guideline Workgroup: Maccabee-Ryaboy, Wu, Pomputius, Hester, Koutsari, George, Ray, Wegmann

Disclaimer: This guideline is designed for general use with most patients; each clinician should use their own independent judgment to meet the needs of each individual patient. This guideline is not a substitute for professional medical advice, diagnosis or treatment.